



ACE SERIES

# ACE + AS6

## RACK CONVEYOR DISHWASHING MACHINE

### DESCRIPTION

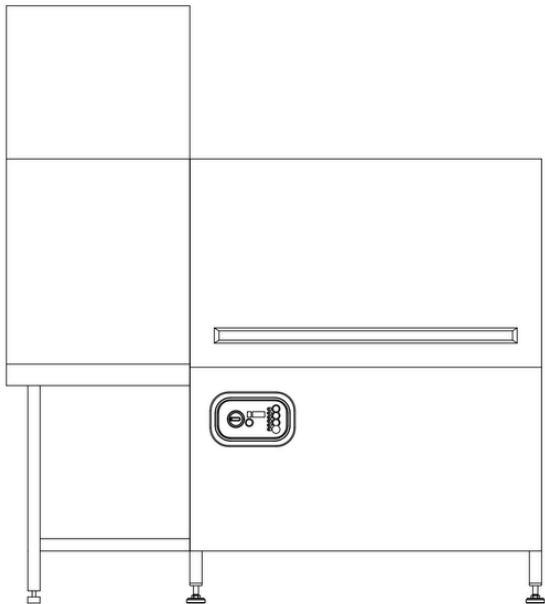
1150 mm wash and rinse module + 600 mm Blower dryer  
- Counterbalanced insulated doors.

### STANDARD FEATURES

- AISI 304 stainless steel tank chassis and paneling;
- Wash and rinse modules feature counterbalanced Inspection doors with integral balancing springs;
- Stainless steel upper and lower inspectable washing manifolds with negative embossed anti-drip nozzles;
- Stainless steel upper and lower inspectable rinse manifolds;
- All components - washing and rinsing arms, filters, curtains - are easily removable for thorough daily cleaning;
- Smooth internal doors: pipes are external to washing chamber to avoid dirt deposit;
- Stainless steel central pawl bar system. The rack is perfectly centred between the side guides for the most efficient and fluid operations;
- Deep-drawn tanks with rounded corners guarantees maximum hygiene and prevent dirt deposit;
- Self-draining vertical pumps;
- Door wipe seal for constant cleaning of the inside of the door;
- Whole tank stainless steel filters and safety pump suction filter;
- 2 speed;
- Inverter for Automatic Speed Control;
- 24V control circuit;
- Economizer: this water saving device activates rinsing only when trays and cutlery are detected in the rinse module;
- Electrical provision for detergent and rinse aid dosing pumps connection;
- Color Coding: Every module of our tunnel machine - and its internal components- is identified with a colour, for the ease of the staff in cleaning operations and in the process of preparing the machines, avoiding incorrect combinations resulting in malfunctions;
- External machine data plate showing unit serial number, electric load, complete with QR code for technical documentation download;
- IPX4;
- Feeding direction: right/left;
- Electric or steam heated execution;
- Lower digital display with touch point buttons.

# ACE + AS6

## STANDARD EXECUTION



### 1150 mm - Wash and rinse module:

- 2 upper wash arms with 6 nozzles each (water temperature 50/60 °C);
- 2 lower wash arms with 6 nozzles each (water temperature 50/60 °C);
- 1 upper rinse arm with 4 nozzles (water temperature 85 °C);
- 1 lower rinse arm with 4 nozzles (water temperature 85 °C);
- The double stainless steel filter system covering the whole tank surface collects and conveys the dirt into a basket filter and guarantees an effective water filtration.

### 600 mm - Blower dryer:

- The air inside the machine is heated in a battery with heaters and blown on the dishware by means of an upper jet which is adjustable to optimize the result. Part of the warm air of the dryer is recycled through a suction system within the module and mixed with clean air to decrease humidity, considerably reducing energy consumption

# ACE + AS6

## TECHNICAL INFO - STANDARD CONFIGURATION

EXTERNAL DIMENSIONS (LxPxH) (mm)	1750 x 790 x 1950/2000*
CLEARANCE (PxH) (mm)	500x430
WASH TANKS VOLUME (l)	80
RINSE WATER CONSUMPTION EN17735 (l/h)	220
MAX OUTPUT CAPACITY - SPEED I - Hot water connection (racks/h)	70
MAX OUTPUT CAPACITY - SPEED II (EN17735) - Hot water connection (racks/h)	100
INSTALLED LOAD (kW) ●	25,45
INSTALLED LOAD (kW) ●	37,45
WASH PUMP (kW)	0,85
TANK HEATER ELEMENTS (kW)	10
BOOSTER HEATER ELEMENT (kW)	8
CONVEYOR SYSTEM (kW)	0,18
DRYER FAN POWER INPUT (kW)	0,42
HEATING ELEMENT (kW)	6
LATENT CAPACITY (kW)	7,3
SENSIBLE CAPACITY (kW)	7,5

\*Overall Size

# ACE + AS6

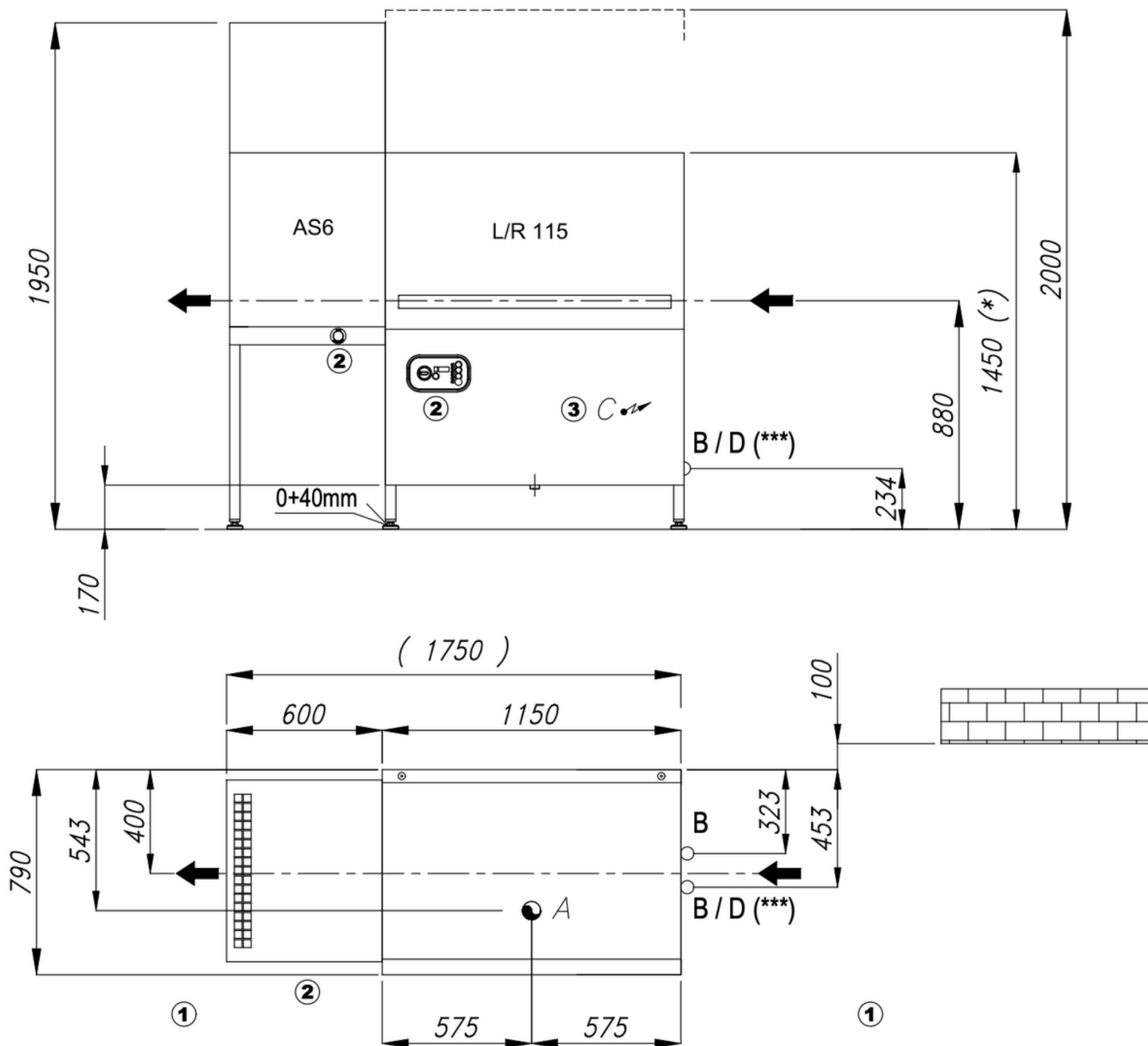
## STANDARD EQUIPMENT - RACK AND INSERTS

- n.1 P12/18 dish rack (12 deep dishes or 18 dinner dishes)
- n.1 Combination Rack – CB h. 75 mm
- n. 1 Eight - compartment silver rack
- User Manual
- Pre-Wired Terminals for dosing pumps Connection.
- QR code for access to the Spare Parts Portal



# ACE + AS6

## INSTALLATION DRAWING



This drawing refers to the standard machine without any additional accessories. Feeding direction: right/left  
The installation drawing for the selected configuration is available upon request.

The previous non-binding guidelines outline the ideal operating conditions for the machines. Actual values may vary depending on installation conditions and the items being washed. The operator is responsible for selecting the appropriate cycle and speed based on the level of soiling, taking into account both the current and expected washing and rinsing performance. Local conditions, such as the temperature of incoming water and the power supply, may require adjustments to these values. The actual volume of rinse water may also vary depending on site-specific conditions.

Comenda Ali Group srl reserves the right to modify product specifications at any time without prior notice.